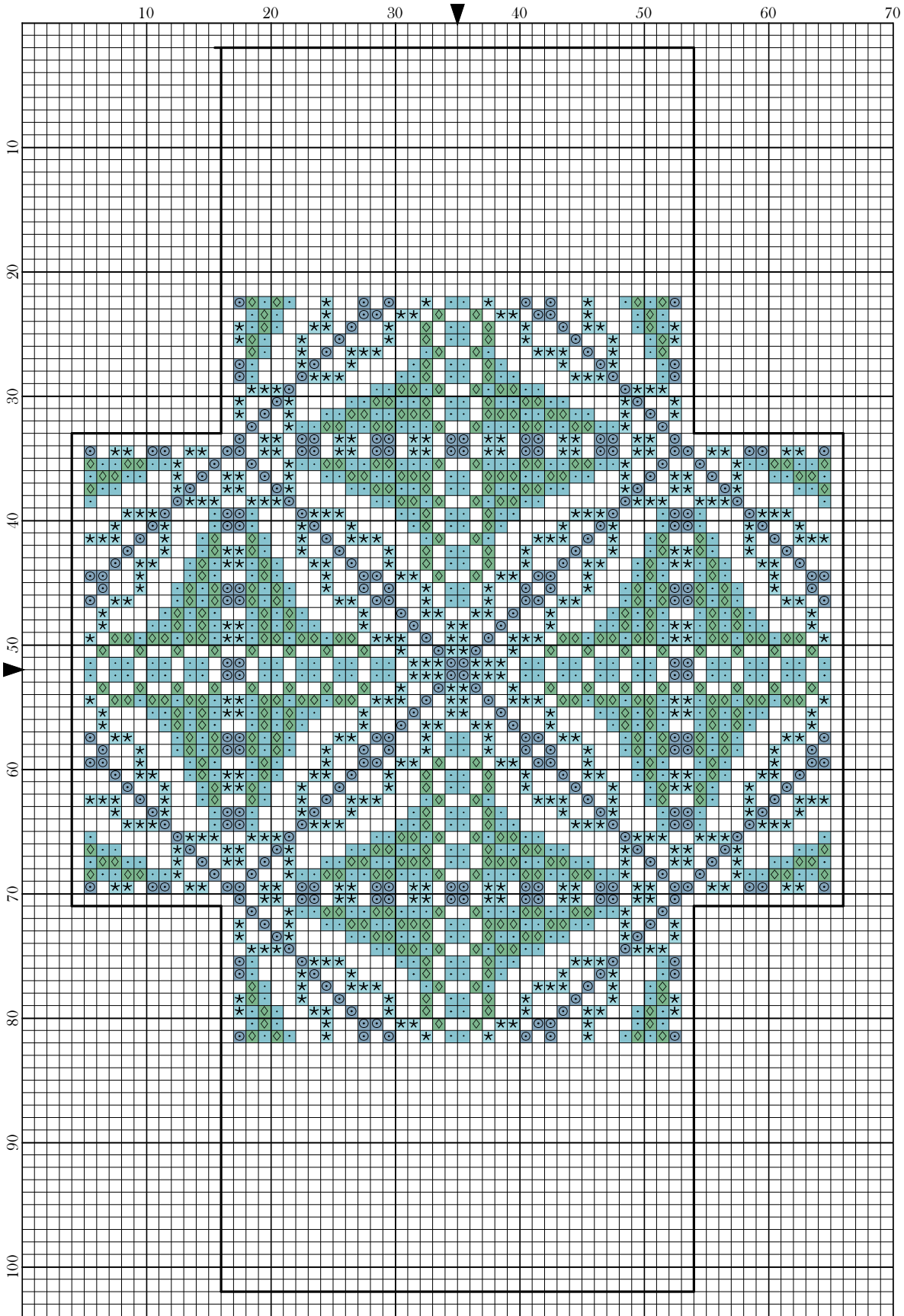


Shimmering Seas - Box Pincushion by Magical525



Copyright Magical525 2021

Legend:

DMC-932
 DMC-3761
 DMC-598
 DMC-3816

Backstitches:

DMC-310

Shimmering Seas - Box Pincushion

Author: Magical525
Copyright: Copyright Magical525 2021
Website: <https://MagicalQuilts.blogspot.com>
Grid Size: 70W x 104H
Design Area: 4.43" x 7.14" (62 x 100 stitches)

Legend:

 [2] DMC 932 antique blue - lt (300 stitches, 0.1 skeins)	 [2] DMC 598 turquoise - lt (552 stitches, 0.2 skeins)
 [2] DMC 3761 sky blue - lt (496 stitches, 0.2 skeins)	 [2] DMC 3816 celadon green (400 stitches, 0.2 skeins)

Backstitch Lines:

 DMC-310 black (23.18 inches, 0.1 skeins)

Welcome to the second part of a sewing set that I'll be giving as Friday Freebies!

This is the box pincushion pattern.

You can choose to do the backstitched outlines like they show in the pattern or just use a square for the back. The backstitched outlines fall within the finishing allowance so you don't need to use a bigger bit of fabric because of them.

Please do leave a message on my blog, <http://magicalquilts.blogspot.com/>, or mention me on Twitter or Instagram with @magical525 if you make this as I'd love to see the results! The tag to use on all social media is #MagicalsSALs

This pattern was given for your own personal use on <http://magicalquilts.blogspot.com/>. You may not sell this pattern, nor may you offer kits with this pattern. You may not sell embroideries made with this pattern, it was made for charitable or personal use only.

Please do not post this pattern (or parts of it) to other sites but refer back to the blog post. This includes sites such as Instagram, Pinterest and Facebook! So for example saying "I stitched this and you can get the pattern here" with a link is allowed but saving the pattern and uploading it as a file to Facebook or Pinterest etc. is not. You may also not edit my pattern and then post it.

You may of course share your finished results where you like, it's just the pattern itself that may not be shared.